



# SUBUD VOICE

FREE & ONLINE

## In this issue

The Japanese tsunami reports...P1

On the street there was panic... eyewitness reports from Christchurch earthquake ...P2

In search of the bigger picture... Bjorn Vaughn writes about Borneo Productions International...P4

Femme et Chien... a favourite photo from Marcus Bolt... P7

Remembering Abdullah... Abdurrachman Mitchell writes about Abdullah Pope... P8

Bapak Subud: The Man and the Messenger of God... Abdullah Pope's last article... P11

News from Ukraine... by Sandra Lykhatska... P13

Muftiah Arnold... tributes and extracts from her book... P14

One plus one equals... a story of triumph over adversity by Manike Maliyadde... P16

A saxophone finds a home in Cuba... by Hardwin Blanchard...P17

Soul Lightening by Aminah Raheem... reviewed by SharIfin Gardiner... P19

The Spiritual Realm by Samuel Lesley...reviewed by Ilaine Lennard... P19

Notices & Information about Subud... P20

Advertisements... 21

SUBUD VOICE ONLINE  
CONTACT DETAILS:  
editor@subudvoice.net

Number 3  
April 2011



## The Japanese tsunami

Our sympathy and concern goes out to all people who have suffered in the Christchurch earthquake and Japanese tsunami. In addition to the information provided here about how these events have affected Subud members, and how you can help, please go to our web site [www.subudvoice.net](http://www.subudvoice.net)

*On Friday March 11 a massive earthquake struck northeast Japan and set off a devastating tsunami. Soon after Rozak Tatebe wrote to Ilaine Lennard...*

Thank you for your concern. We have 2 Subud families in the north part of Japan facing the Pacific which was devastated by the earthquake and tsunami, but just a few parts of their houses were damaged and no one was injured fortunately.

In Tokyo area we got a good shake, and communication and transportation have been disrupted, but based on my personal experience and the news, I doubt if anyone was more than inconvenienced.

The scale of the quake and tsunami was huge and TV is reporting the horrifying, destructive power of the tsunami all day long. The dead and missing are more than 1900 now, but the number of victims may increase further. The Fukushima atomic power plant was partly damaged and people within the radius of 20 km from it have been instructed to evacuate.

I hope that the situation does not become worse. This is just my personal take on the situation. Please do not report it as official news. ▶

### DISCLAIMER NOTICE

The opinions expressed in the various articles are the sole responsibility of their authors and cannot be seen as representing the opinion of the World Subud Association or of Subud Voice. The name Subud ® and the Seven Circles Symbol are registered marks of the World Subud Association.

*Arisa Ooi, Committee Councillor Subud Japan, writes...*

Thank you so much for all your warm messages. We have not yet gathered enough information about all members, but, thanks to God, a member living in Sendai, the quake/tsunami-hit prefecture, is safe together with his family, though his home is still without power and water, and it is snowing.

Otherwise, most of the members live in Tokyo, Kansai and Kyushu areas, away from the quake-hit region. However, strong temors were also felt in Tokyo. In Tokyo, I was in classroom with my students when the quake struck. The shaking lasted several minutes, but for me it seemed very long with some of kids crying with fear. I was just saying 'Allah, Allah' in my heart. Thanks to God, none of us was injured and we evacuated safely.

After the earthquake, many people remained stuck where they were as public transit across Tokyo and suburb area shut down. Aftershocks or other quakes are following almost every half an hour since the biggest one, so, I stayed overnight at school with some colleagues. We will keep you updated with our members' news.

SDIA will be sending emergency funds for humanitarian relief for victims of the more recent earthquake in Japan so that Subud members there can assist others in need. These funds will be sent through the SD Japan team. To make a donation, go to the Donate Now! page of our website. Select "Emergency Fund" on the drop down menu and, in the field below that, type in "Japan Earthquake [www.susiladharma.org](http://www.susiladharma.org)

Please go to our web site [www.subudvoice.net](http://www.subudvoice.net) for further information about these events. ◆

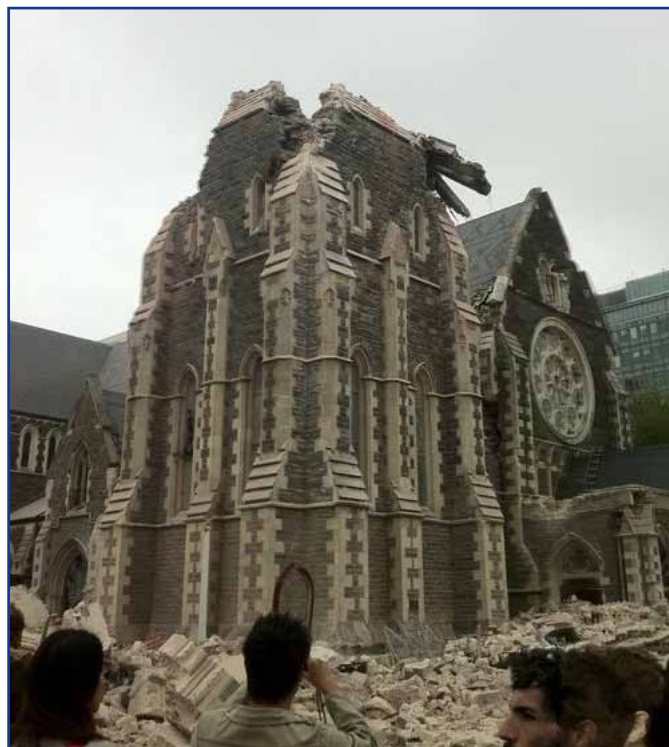
## On the street there was panic

*First hand reports from the earthquake in Christchurch...*

*At 12:51 (local NZ time) on Tuesday, February 22nd, a 6.3 earthquake hit Christchurch. It was, in fact, one of thousands of aftershocks from the September 4th quake. It has caused severe damage and many deaths. According to reports so far received (February 27th), no Subud members were injured, but properties have been damaged. Our sympathy goes out to all affected by this disaster...*

*Liliana MacDonald writes...*

As I write my computer is telling me it detects vibration. Well that's only natural, we are having some more aftershocks, strong ones too. We came out to Charteris Bay to charge computer batteries and phone. No power in Heathcote but there is here. Also we are getting water.



*Christchurch Cathedral after the February 22nd earthquake  
(Photo Source: TessWoolcock/twitpic.com/42dzk8)*

The first earthquake, in September, was like taking children to the science museum and into a room that simulates an earthquake so they can see what it's like... compared to this one.

The roads in the eastern and southern parts of town are full of water, mud, deep holes, ditches, breaks and cracks. It takes four hours to get to New Brighton or into town and back. They are telling us that even when the water comes back on we are not to flush toilets, because the pipes to the sewer plant are broken and the contents will end up in the roads, rivers and beaches. Rocks are falling off the hills continually and crashing into houses and people. Cars are parked halfway down Bridlepath road from the tunnel, which is closed, and their owners walk from there up the bridlepath and down into Lyttleton.

Three of these people have been killed by falling rocks already. Town is cordoned off and surrounded by soldiers to prevent looting. A hotel is about to fall over and other buildings tilting, and so many are just rubble now. And so on.

We are all OK. Everyone seems a bit in shock. I feel like I am shaking inside and it doesn't stop, probably uncontrolled adrenalin rush. I hope it stops soon. Maynard and I both feel very unsteady on our feet, like the ground is moving all the time. We all have been having an evening meal together every night sharing food.

Some supermarkets in the northern suburbs are open, and more open today. Woolies won't open because ▶

the roads are a mess and there's no power in our area. There are hour long queues in petrol stations and for water at water depots. But water has come back on in most places, (not Heathcote) so that should ease up.

A surprising number of people are leaving town. Hundreds. Maynard and I sleep in the camper. I got no sleep the first night because the constant aftershocks were so noisy and kept me awake. The camper is better, if not as comfy. Many people seem to be sleeping in cars or caravans, probably for the same reasons...

*Michael van der Matten writes...*

Yes, we were in the centre of town when it happened. Halimah and I – with our daughter Alina – were just visiting our granddaughter Miranda's school for coffee when the quake hit at lunch time.

The pupils dived immediately under the tables and we joined. The whole large building shook and jolted for about 20 long seconds. Afterwards we went down the stairways very quickly; the sides were badly cracked. On the street there was panic and cars were crushed under fallen brickwork and facades. We all had to walk in the middle of the street to avoid more risk. We could not go into the carpark to get the car and started walking back home.

Alina and Miranda ran to the schools where the other four children were and Halimah and I started the long road back to the East suburb of Heathcote (direction Lyttelton harbour); about 8 km. Many of you will remember that is where the Subud house and halls are.

Everywhere there was debris and people in shock and worse. All our family turned out to be unharmed and I think that we all were incredibly fortunate.

Miranda had met up late with us at her school and we had not managed to get together to a favourite café for lunch. When we passed by later, we could only see its collapsed ruin.

When we finally arrived back at the house, the structure was fine but inside it was like a warzone. Whole bookcases spread over the floor, our glasswork broken, fridge open, honey and eggs spread and the TV and radio were broken.

No electrics, no water at all. Luckily the gas bottles were still connected to boil water and to cook.

*I feel like I am shaking inside and it doesn't stop*

The house of Rashad and Alina (Addison) was a bit of a centre for family and friends. Tents went up in the garden as adults and kids were afraid to sleep in their houses. Rashad's sister Arifa moved in with her rabbits as her house had become unsafe and Ramzi, Aisjah and the grandmother joined for the first night in the tents.

Gradually we have cleaned up the house; Rasjad dug a hole in the garden as a toilet; water jerrycans were organised; we visited friends in other parts of town to recharge our mobile phones and I managed to rent a car in the West of CHCH (where there is little damage) and joined a long queue to fill up my petrol tank.

It may still be quite a while before water and electricity will be restored to the East side of CHCH. School buildings have been damaged and it is not clear when the kids can go back to school and Rasjad can resume teaching. The kids and everybody have been great and the large trampoline between the tents is a good meeting place for them.

Hubert and Sri Talib (38 weeks pregnant) became even more part of the family and we saw the MacDonald's regularly too. Maynard and Liliana's house does not look safe anymore with much of the brickwork loose and some even fallen down. So far we feel after shocks every 2 to 20 minutes. Some you hear coming as a low rumble or thunder and then the shakes come. However when the epicentre is below us then there is no warning at all and then you just feel the sudden jolts and shakes.

After the September 4 earthquake this is now the second big one to hit Christchurch and in between there have been over 2000 aftershocks.

The September 4 quake had its epicentre about 40 km from the city and was quite deep. What made this last one so damaging was that the epicentre was really close under the East area of Christchurch and Lyttelton and it was not deep at all and thus caused a lot of movement. It was better to reduce the number of people in the house and Halimah and I have now left the city and are staying up North in a motel in Kaikoura. Only now we realise how tired we are and we sleep a lot.

*These were the latest report available to us at the time of going to press. Check Subud World News for subsequent reports of Subud members, and other news sources for general news and photos.*